



**CSAGROUP**  
EST • 1956

# WHO WE ARE

## COMPANY PROFILE

Experienced  
Trusted  
Local

**69**YRS  
FIRM



A full-project service delivery and consulting firm focused on civil and social infrastructure sectors.



Serving public and private sector clients throughout multiple regions in the United States, the Caribbean, and Latin America.



New York  
Pennsylvania  
New Jersey  
Maryland

Washington, D.C.  
Florida  
Puerto Rico  
Panama



### AWARD RECOGNITION

*American Public Award Works Association - Excellence in Project Management Award*  
CSA closed over 3,300 Project Worksheets with zero questions or disallowances from FEMA. The program CSA set up received excellent reviews and recognition after a management and accounting audit performed by Deloitte.



### OUR PARTNERSHIPS



### SERVICES



PROGRAM / PROJECT  
MANAGEMENT



CONSTRUCTION  
MANAGEMENT &  
INSPECTIONS



ARCHITECTURE



ENGINEERING



EMERGENCY  
MANAGEMENT &  
RESILIENCE



ENVIRONMENTAL

### SECTORS



#### ENERGY

- GENERATION
- TRANSMISSION, DISTRIBUTION & SUBSTATIONS
- RENEWABLE ENERGY
- MICROGRIDS & STORAGE



#### WATER

- WATER TREATMENT, SUPPLY & DISTRIBUTION
- DAMS, RESERVOIRS, & CANALS
- MODELING & DATA ANALYTICS
- WASTEWATER COLLECTION, CONVEYANCE & TREATMENT
- STORMWATER, HYDRAULICS & HYDROLOGY



#### TRANSPORTATION

- AIRPORTS
- HIGHWAYS
- BRIDGES
- RAIL
- SEAPORTS



#### FACILITIES

- COMMERCIAL
- EDUCATION
- INDUSTRIAL
- INSTITUTIONAL
- HEALTHCARE
- HOSPITALITY
- HOUSING
- PARKS & RECREATION



**NATIONALLY  
RANKED  
FIRM**

**2025  
ENR**

**TOP  
50:**

Program Management Firms

**TOP  
100:**

Construction Management  
for-Fee Firms

**TOP  
500:**

Design Firms

Source: Engineering News-Record Construction Weekly Magazine 2025

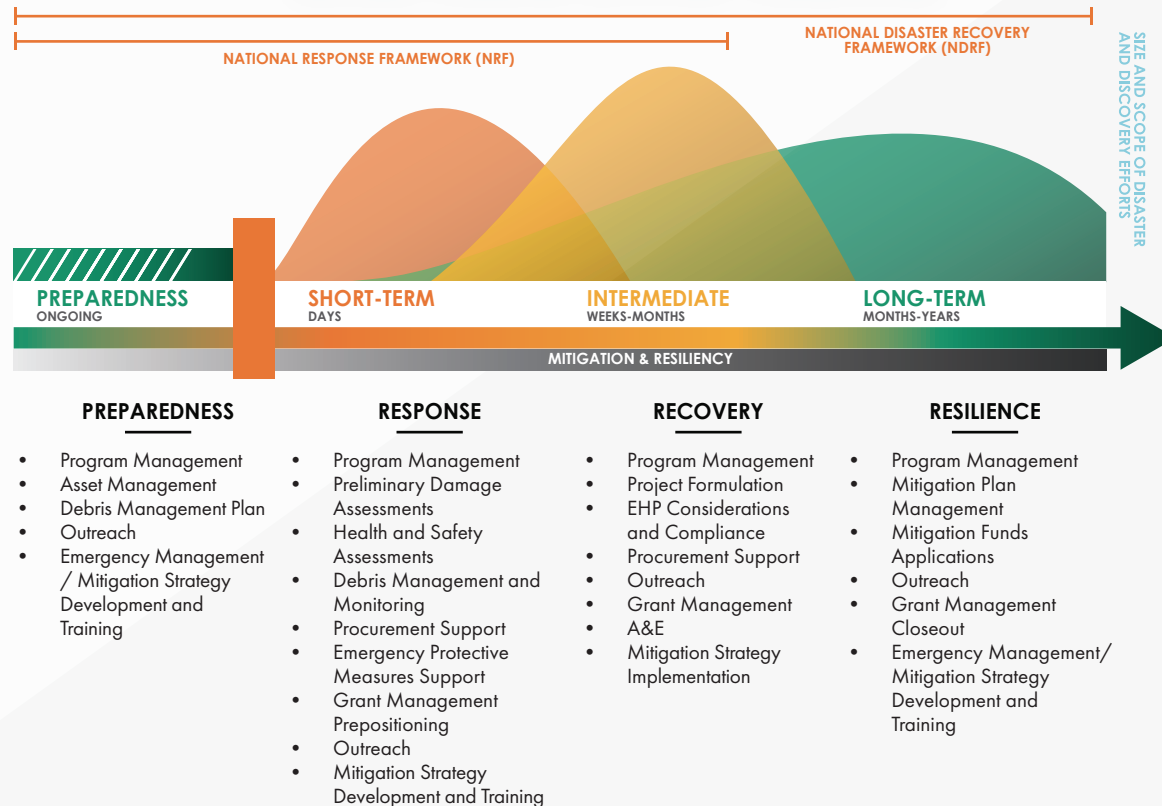
# EMERGENCY MANAGEMENT

CSA Group is an organization whose professionals have lived and worked through numerous major storms with key roles in Preparedness, Response, Recovery and Resilience efforts; as such, we understand that disaster recovery can be a long, costly process that can overwhelm the affected communities and governments. CSA can assist public sector clients and communities navigating and managing the complex process of disaster recovery. Recognizing and responding to climate change is part of our commitment to developing resilient communities.

Our efforts for supplying emergency and disaster preparedness, response, recovery and resilience extend throughout the US, with a strong focus on the Gulf States, the East Coast, and the Caribbean for facility and infrastructure projects. Whether through resiliency planning, debris removal management, recovery engineering, permitting, construction management, FEMA/CDBG-DR program management and/or other activity, CSA stands ready to help you through your Preparedness, Response, Recovery and Resilience stages of your project.

CSA follows FEMA's most current National Disaster Recover Framework guide for disaster-impacted states, territories, and local jurisdictions for effective recovery support. This flexible structure enables disaster recovery managers to operate in a collaborative and unified manner for the restoration, redevelopment, and revitalization of communities for a more resilient nation.

## CSA SERVICE OFFERINGS ACROSS THE NATURAL DISASTER RECOVERY FRAMEWORK



**30+ YRS** EXPERIENCE IN EMERGENCY MANAGEMENT

**\$65 BILLION** FUNDS MANAGED IN EMERGENCY RELIEF AND REPAIR EFFORTS

### FEATURED PROJECTS:

